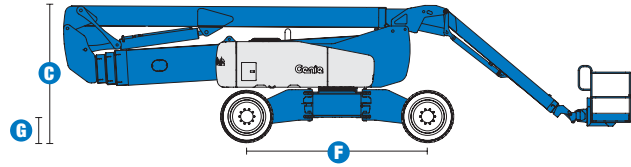
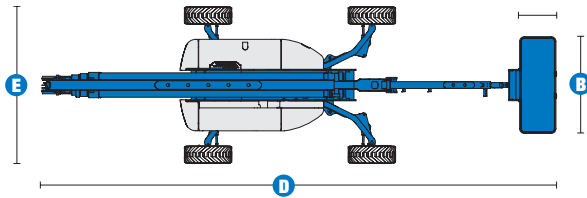


Specifications



MODEL Z™-135/70

MEASUREMENTS	Metric	US
Working height max	43.15 m	141 ft
Platform height max	41.15 m	135 ft
Horizontal reach max - riser extended	18.13 m	59 ft 2 in
Horizontal reach max - riser retracted	21.26 m	69 ft 9 in
Up and over clearance max -		
riser extended	23.01 m	75 ft 6 in
riser retracted	9.81 m	32 ft 6 in
Below ground reach	5.59 m	18 ft 4 in
A Platform length - 6 ft/8 ft model	183 cm / 76 cm	72 in / 30 in
B Platform width - 6 ft/8 ft model	244 cm / 91 cm	96 in / 36 in
C Height - stowed	3.07 m	10 ft 1 in
D Length - stowed	12.93 m	42 ft 5 in
E Width - axles extended	3.94 m	12 ft 11 in
Width - axles retracted	2.46 m	8 ft 1 in
F Wheelbase - axles extended	4.11 m	13 ft 6 in
Wheelbase - axles retracted	4.72 m	15 ft 6 in
G Ground clearance - centre	51 cm	20 in

PRODUCTIVITY

Lift capacity	272 kg	600 lbs
Platform rotation	160°	
Turntable rotation	360° continuous	
Turntable tailswing - axles extended	79 cm	31 in
Turntable tailswing - riser down	4.27 m	14 ft
Drive speed - stowed	4.83 km/h	3.0 mph
Drive speed - raised	1.13 km/h	0.7 mph
Lift speed to full height	96 sec	
Gradeability*	45%	
Inside turning radius - axles extended	2.29 m	7 ft 6 in
Inside turning radius - axles retracted	5.51 m	18 ft 1 in
Outside turning radius - axles extended	5.64 m	18 ft 6 in
Outside turning radius - axles retracted	7.77 m	25 ft 6 in
Controls	12 V proportional controls	
Tyres	445/65 D22.5 18 ply foam-filled	

POWER

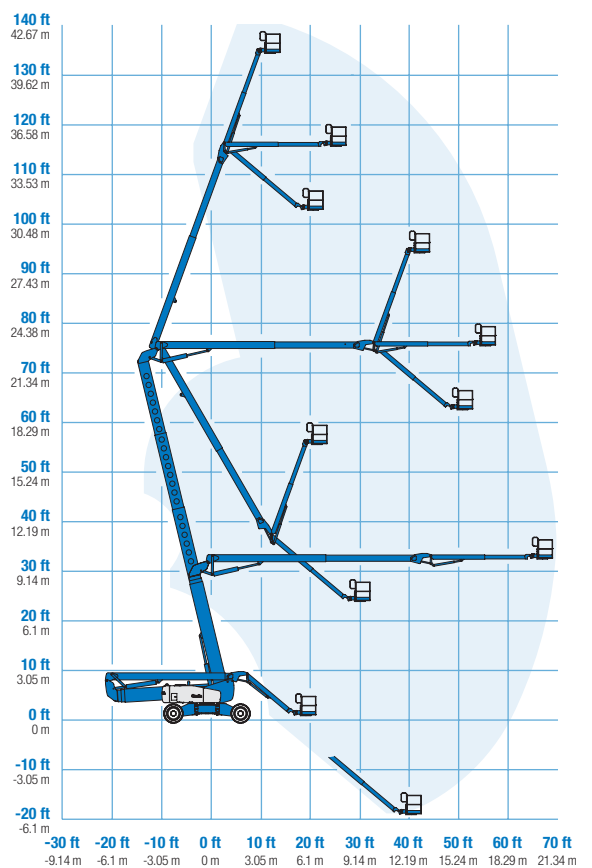
Power source	Cummins B4.5L 4-cylinder diesel, 80 hp (59.7 kW) Perkins 1104C-44 4-cylinder diesel, 86 hp (64 kW) Deutz BF4L2011 4-cylinder diesel, 78 hp (58.1 kW)
Auxiliary power system	12 V DC
Hydraulic tank capacity	246.1 L 65 gal
Fuel tank capacity	151.4 L 40 gal

WEIGHT**

	20,255 kg	44,654 lbs
--	-----------	------------

STANDARDS COMPLIANCE AS 1418.10

RANGE OF MOTION Z™-135/70



-30 ft -9.14 m -20 ft -6.1 m -10 ft -3.05 m 0 ft 0 m 10 ft 3.05 m 20 ft 6.1 m 30 ft 9.14 m 40 ft 12.19 m 50 ft 15.24 m 60 ft 18.29 m 70 ft 21.34 m

*Gradeability applies to driving on slopes. See operators manual for details regarding slope rating.

**Weight will vary depending on options and/or country standards.

Features

EASILY CONFIGURED TO MEET YOUR NEEDS

PLATFORM

- Steel 2.44 m (8 ft) (standard)

JIB

- 12 to 20 ft (3.7 to 6.1 m)
JIB EXTEND™

POWER

- Deutz diesel 79 hp (58.9 kW)

DRIVE/STEER

- 4-wheel drive (standard)
- 4-wheel steer (standard)

TYRE

- Extra-wide rough terrain, foam-filled (standard)

STANDARD FEATURES

MEASUREMENTS

- 43.15 m (141 ft) working height
- 21.26 m (69 ft 9 in) horizontal reach
- 23.01 m (75 ft 6 in) up and over clearance
- Up to 272 kg (600 lb) lift capacity

PRODUCTIVITY

- 3.70 to 6.10 m (12 to 20 ft)
JIB EXTEND™
- Self-leveling platform
- Fully proportional Hall effect controls
- Drive enable
- AC power to platform
- Horn
- Hour meter
- Tilt alarm
- On-board full diagnostics and engine monitoring display
- ALC 1000 electronic control system
- 360° continuous turntable rotation
- X-Chassis™ extendable axles
- Four wheel high angle steer
- Four steering modes: front, rear, crab and coordinated
- Four wheel brakes
- Full-time positive traction 4WD
- Hydraulic oil cooler
- Adjustable foot switch timeout
- Two-speed wheel motors
- Alarm package
- Engine guarle package



STANDARD FEATURES cont.

POWER

- All engines are emission compliant
- 12 V DC auxiliary power
- Engine protection package
- Deutz intake air heater
- Swing out engine tray

OPTIONS & ACCESSORIES

PRODUCTIVITY

- Platform swing gate
- Half mesh platform inserts with swing gate
- Platform top auxiliary rail
- Air line to platform
- Hostile environment kit
- Deluxe hostile environment kit
- Tool tray
- Fluorescent tube caddy
- Alarm package
- Platform work lights
- Front driving lights
- Lockable platform control box covers
- 5000 watt generator (240 V/50 Hz)
- Cold start packages
- Diesel scrubber/spark arrestor
- Diesel spark arrestor muffler

Genie Australia

591 Boundary Road, Darra, Qld 4076
PO Box 394, Richlands, Qld 4077
Tel: + 61 7 3375 1660
Toll Free In Australia: 1800 331 660
Fax: + 61 7 3375 1002

European Offices

UK

The Maltings
Wharf Road
Grantham NG31 6BH
UK
Tel: +44 (0)1476 584333
Fax: +44 (0)1476 584334

France

10, ZA de la Croix St. Mathieu
28320 Gallardon
France
Tel: +33 (0)2 37 26 09 99
Fax: +33 (0)2 37 26 09 98

Germany

Finienweg 3
28832 Achim/Bremen
Germany
Tel: +49 (0)4202 8852-0
Fax: +49 (0)4202 8852-25

Spain

Gai`a 31, Pol. Ind. Pl`a d'en Coll
08110 Montcada i Reixac
Barcelona
Spain
Tel: +34 93 572 50 90
Fax: +34 93 572 50 91

Scandinavia

Tagenevägen 72
425 37 Hisings Kärra
Sweden
Tel: +46 31 57 51 00
Fax: +46 31 57 90 20

Genie United States

18340 NE 76th Street
P.O. Box 97030
Redmond, Washington 98073-9730
USA
Tel: +1 425 881-1800
Fax: +1 425 883-3475

WEB: www.genieindustries.com

Distributed By: